



Jennifer Anne Schofield

June 7, 1936 - August 1, 2025

Jennifer Anne Schofield, 89, passed away August 1, 2025, in Walnut Creek, CA.

Born Jennifer Kelly on June 7, 1936, in Winchester, England to Thomas and Violet Kelly, she grew up in southern England. She received an undergraduate degree in mathematics from Exeter University and a PhD in psychology from Cambridge University.

After completing her PhD, she moved to “the other Cambridge” in Massachusetts where she worked for Bolt, Beranek and Newman on a research contract with NASA to evaluate the human factors of Apollo capsule navigation controls. In Massachusetts she met George Schofield, and the two of them married in 1964. They subsequently moved to New Jersey, Washington state, and California, and ultimately settled down in the Napa Valley where they lived from 1975 until 2023 and raised their three children.

In the early 1990s Jennifer opened her own business, tutoring local students in mathematics and offering SAT preparation classes. Later she earned her teaching certificate and worked as a substitute teacher in St. Helena schools. She served on the St. Helena School Board from 1999 to 2003.

She will be remembered for her sharp wit and fierce intellect; her love of

puzzles, puns, roses, knitting, and especially mathematics; her sweater collection (particularly the ones she knitted herself); her devotion to her family; and the joy she experienced in teaching others. She was an avid travel photographer in her early twenties, and in her later years she rediscovered her love of photography – particularly nature photography around the Napa Valley.

Jennifer is survived by her husband of 61 years George; their three children Christopher, Kevin and Kathryn; seven nieces and nephews, three grandchildren and one great-granddaughter.

A Funeral Mass will at 11am on August 7th at St. Thomas Aquinas Church in Napa, California, followed by a burial ceremony at Napa Valley Memorial Park.

Those who wish to make a gift in her memory may direct a donation to the Schofield Family Scholarship Fund at the Seattle Community Foundation.

Cemetery Details

Napa Valley Memorial Park

2383 Napa Vallejo Highway
Napa, CA 94558

Previous Events

Funeral Mass

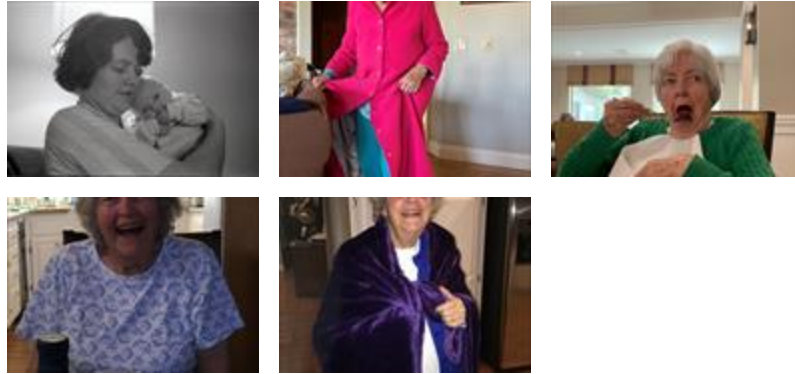
AUG 7. 11:00 AM.

St. Thomas Aquinas Church

Tribute Wall

KS

“ 5 files added to the album Memories Album



Kevin Schofield - August 07, 2025 at 12:03 AM



“ 3 files added to the album Memories Album



Treadway & Wigger Funeral Chapel & Crematory - August 06, 2025 at 07:21 PM